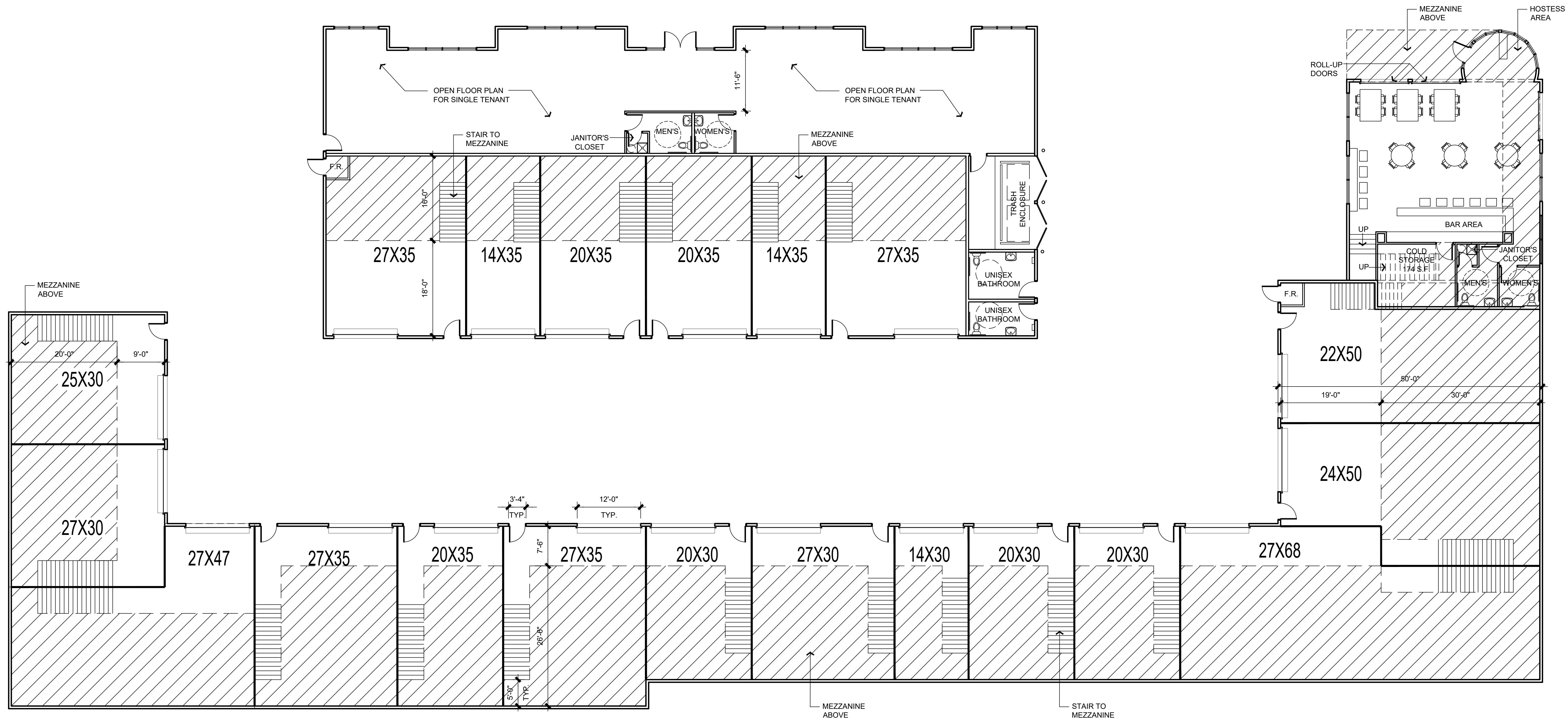


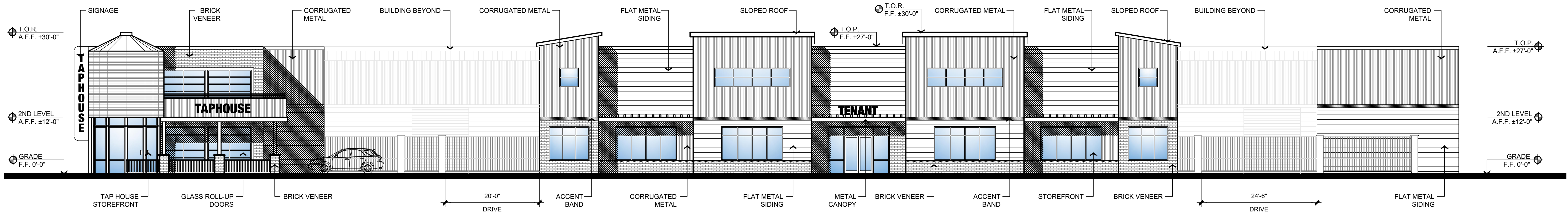
STW
THE VAULT @ ONTARIO
ONTARIO, CA

PRELIMINARY FLOOR PLAN

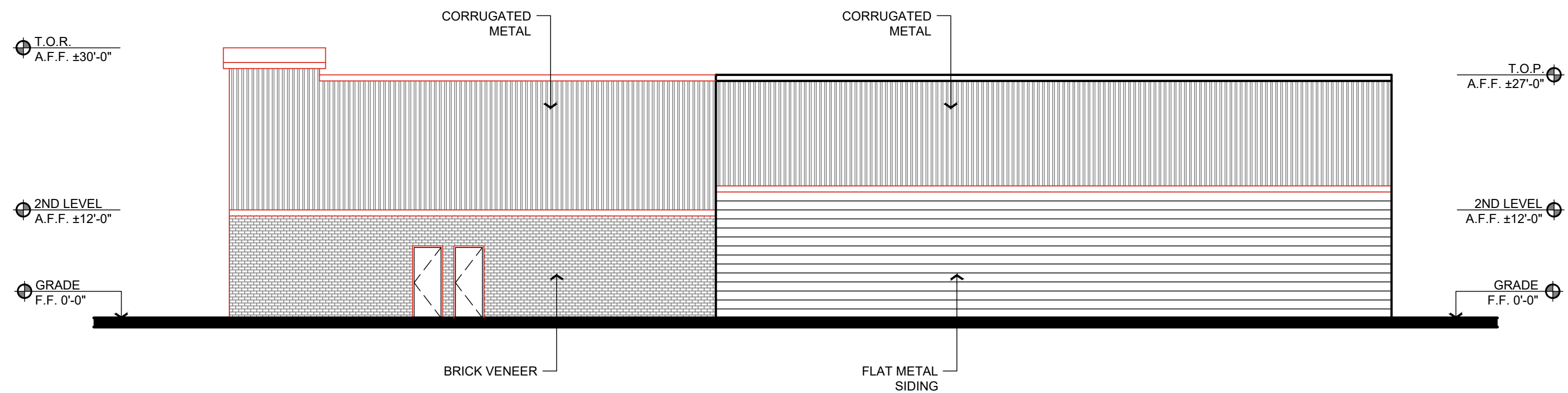


THIS DRAWING AND ITS CONTENTS ARE INSTRUMENTS OF SERVICE AND ARE THE COPYRIGHTED PROPERTY OF JORDAN ARCHITECTS, INC. THE USE IS EXPRESSLY INTENDED FOR THE PROJECT NOTED ABOVE AND MAY NOT BE REUSED OR REPRODUCED IN WHOLE OR IN PART WITHOUT THE WRITTEN PERMISSION OF JORDAN ARCHITECTS, INC. "COPYRIGHT" YEAR OF FIRST PUBLICATION 2018 JORDAN ARCHITECTS, INC.

JOB NUMBER: 19-1008
SCALE: 3/32"=1'-0"
DATE: 02/08/2021



NORTH ELEVATION ①
3/32" = 1'-0"



WEST ELEVATION ②
3/32" = 1'-0"

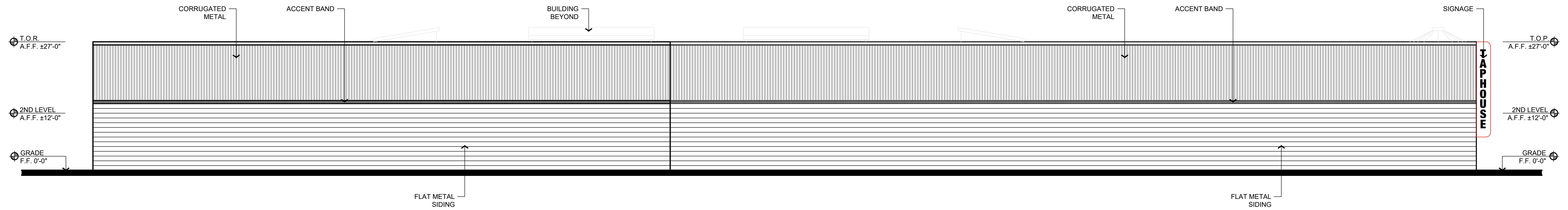
STW
THE VAULT @ ONTARIO
ONTARIO, CA

PRELIMINARY ELEVATIONS

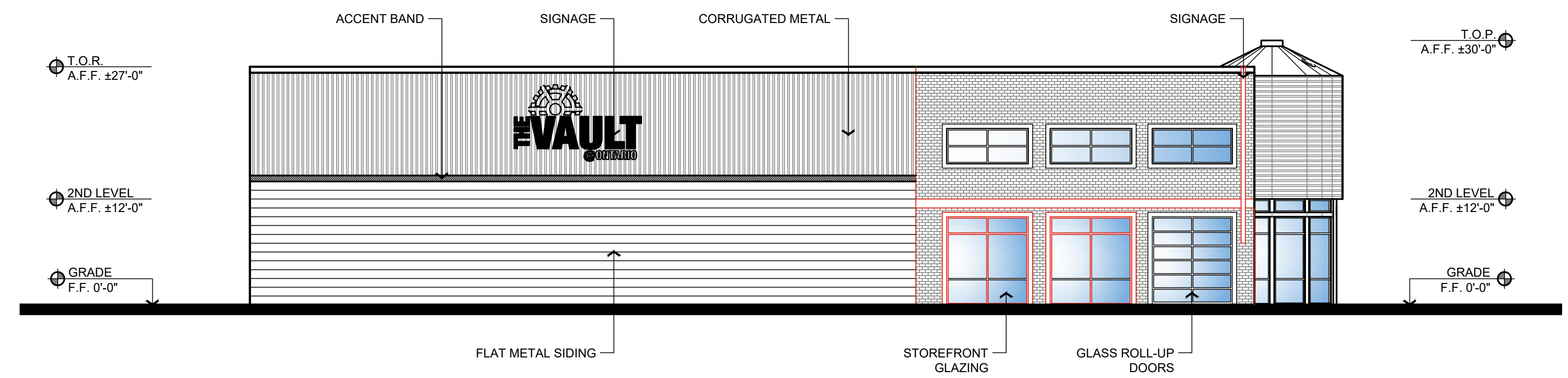
THIS DRAWING AND ITS CONTENTS ARE INSTRUMENTS OF SERVICE AND ARE THE COPYRIGHTED PROPERTY OF JORDAN ARCHITECTS, INC. THE USE IS EXPRESSLY INTENDED FOR THE PROJECT NOTED ABOVE AND MAY NOT BE REUSED OR REPRODUCED IN WHOLE OR IN PART WITHOUT THE WRITTEN PERMISSION OF JORDAN ARCHITECTS, INC. "COPYRIGHT" YEAR OF FIRST PUBLICATION 2018 JORDAN ARCHITECTS, INC.

JOB NUMBER: 19-1008
3/32" = 1'-0"
DATE: 02/08/2021

jordan
ARCHITECTS, INC.
131 CALLE IGLESIA, SUITE 100
SAN CLEMENTE,
CA 92672-7541
Telephone 949.338-8090
Facsimile 949.388-5290



SOUTH ELEVATION ①
3/32" = 1'-0"



EAST ELEVATION ②
3/32" = 1'-0"

STW
THE VAULT @ ONTARIO
ONTARIO, CA

PRELIMINARY ELEVATIONS

THIS DRAWING AND ITS CONTENTS ARE INSTRUMENTS OF SERVICE AND ARE THE COPYRIGHTED PROPERTY OF JORDAN ARCHITECTS, INC. THE USE IS EXPRESSLY INTENDED FOR THE PROJECT NOTED ABOVE AND MAY NOT BE REUSED OR REPRODUCED IN WHOLE OR IN PART WITHOUT THE WRITTEN PERMISSION OF JORDAN ARCHITECTS, INC. "COPYRIGHT" YEAR OF FIRST PUBLICATION 2018 JORDAN ARCHITECTS, INC.

JOB NUMBER: 19-1008
3/32" = 1'-0"
DATE: 02/08/2021

jordan
ARCHITECTS, INC.
131 CALLE IGLESIA, SUITE 100
SAN CLEMENTE,
CA 92672-7541
Telephone 949.338-8090
Facsimile 949.388-5290



STW
THE VAULT @ ONTARIO
ONTARIO, CA

PRESENTATION RENDERING

THIS DRAWING AND ITS CONTENTS ARE INSTRUMENTS OF SERVICE AND ARE THE COPYRIGHTED PROPERTY OF JORDAN ARCHITECTS, INC. THE USE IS EXPRESSLY INTENDED FOR THE PROJECT NOTED ABOVE AND MAY NOT BE REUSED OR REPRODUCED IN WHOLE OR IN PART WITHOUT THE WRITTEN PERMISSION OF JORDAN ARCHITECTS, INC. *COPYRIGHT* YEAR OF FIRST PUBLICATION 2019 JORDAN ARCHITECTS, INC.

JOB NUMBER: 19-1008
N.T.S.
DATE: 02/08/2021

jordan
ARCHITECTS, INC.
131 CALLE IGLESIA, SUITE 100
SAN CLEMENTE,
CA 92672-7541
Telephone 949.338-8090
Facsimile 949.388-5290



STW
THE VAULT @ ONTARIO
 ONTARIO, CA

PRESENTATION RENDERING

THIS DRAWING AND ITS CONTENTS ARE INSTRUMENTS OF SERVICE AND ARE THE COPYRIGHTED PROPERTY OF JORDAN ARCHITECTS, INC. THE USE IS EXPRESSLY INTENDED FOR THE PROJECT NOTED ABOVE AND MAY NOT BE REUSED OR REPRODUCED IN WHOLE OR IN PART WITHOUT THE WRITTEN PERMISSION OF JORDAN ARCHITECTS, INC. "COPYRIGHT" YEAR OF FIRST PUBLICATION 2019 JORDAN ARCHITECTS, INC.

JOB NUMBER: 19-1008
 N.T.S.
 DATE: 02/08/2021

jordan
ARCHITECTS, INC.

131 CALLE IGLESIA, SUITE 100
SAN CLEMENTE,
CA 92672-7541
Telephone 949.338-8090
Facsimile 949.388-8290



STW
THE VAULT @ ONTARIO
ONTARIO, CA

PRESENTATION RENDERING

THIS DRAWING AND ITS CONTENTS ARE INSTRUMENTS OF SERVICE AND ARE THE COPYRIGHTED PROPERTY OF JORDAN ARCHITECTS, INC. THE USE IS EXPRESSLY INTENDED FOR THE PROJECT NOTED ABOVE AND MAY NOT BE REUSED OR REPRODUCED IN WHOLE OR IN PART WITHOUT THE WRITTEN PERMISSION OF JORDAN ARCHITECTS, INC. "COPYRIGHT" YEAR OF FIRST PUBLICATION 2019 JORDAN ARCHITECTS, INC.

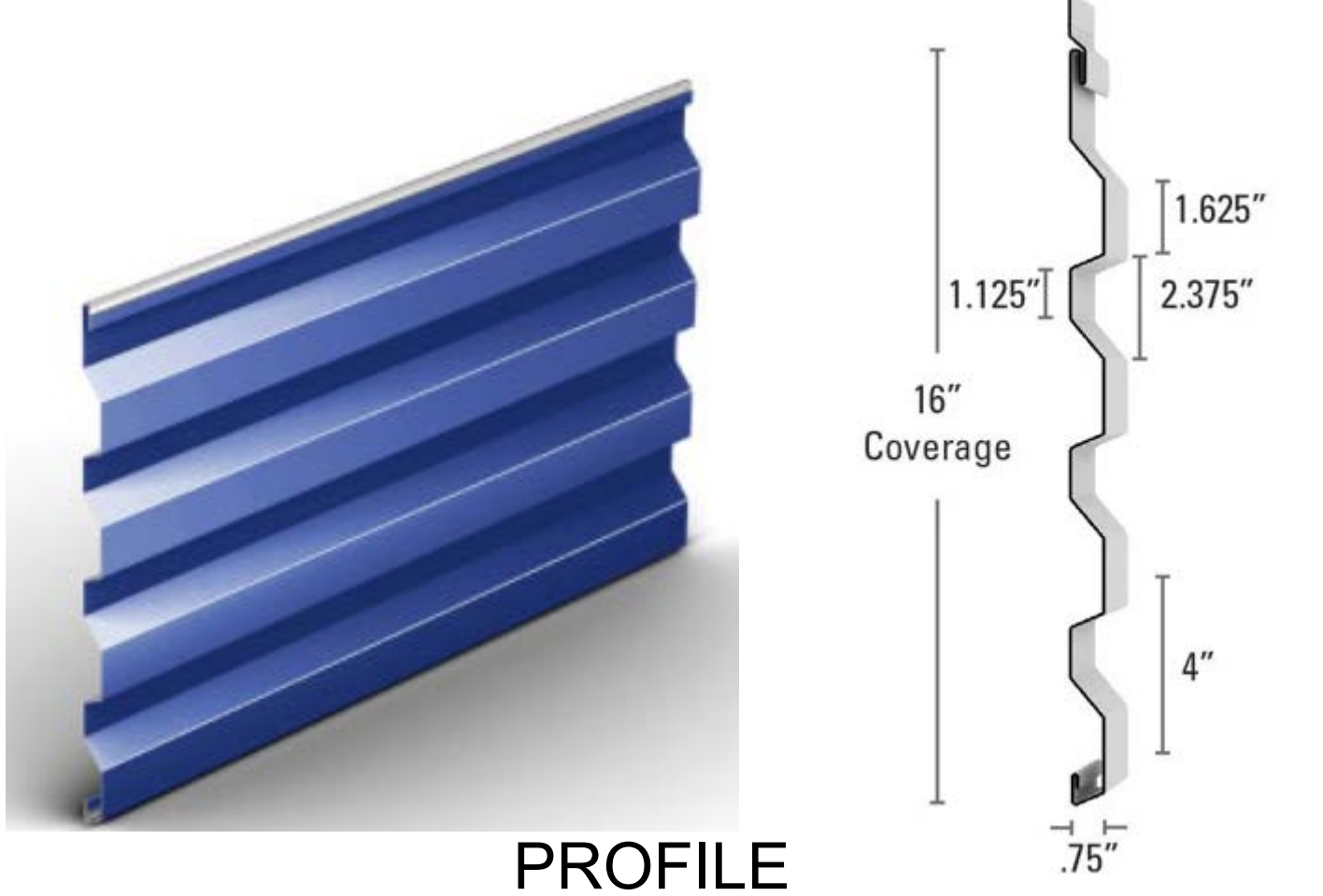
JOB NUMBER: 19-1008
N.T.S.
DATE: 02/08/2021

jordan
ARCHITECTS, INC.

131 CALLE IGLESIA, SUITE 100
SAN CLEMENTE,
CA 92672-7541
Telephone 949.388-8090
Facsimile 949.388-8290



BRICK VENEER
ELDORADO STONE OR EQUAL
TUNDRABRICK
COLOR "HARTFORD"



PROFILE

COLOR

CORRUGATED METAL PANEL
MCELROY OR EQUAL
WAVE PANEL
COLOR "ASH GRAY"



PROFILE

FLAT METAL PANEL
AEP SPAN OR EQUAL
FLUSH PANEL
COLOR "ASH GRAY"



COLOR ACCENT
DUNN EDWARDS
DEA002 RL#476
"BLACK"



COLOR ACCENT
DUNN EDWARDS
DEA105
"RED POWER"

STW
THE VAULT @ ONTARIO
ONTARIO, CA

MATERIAL BOARD

THIS DRAWING AND ITS CONTENTS ARE INSTRUMENTS OF SERVICE AND ARE THE COPYRIGHTED PROPERTY OF JORDAN ARCHITECTS, INC. THE USE IS EXPRESSLY INTENDED FOR THE PROJECT NOTED ABOVE AND MAY NOT BE REUSED OR REPRODUCED IN WHOLE OR IN PART WITHOUT THE WRITTEN PERMISSION OF JORDAN ARCHITECTS, INC. COPYRIGHT YEAR OF FIRST PUBLICATION 2020 JORDAN ARCHITECTS, INC.

JOB NUMBER: 19-1008
SCALE:
DATE: 02/04/2021

